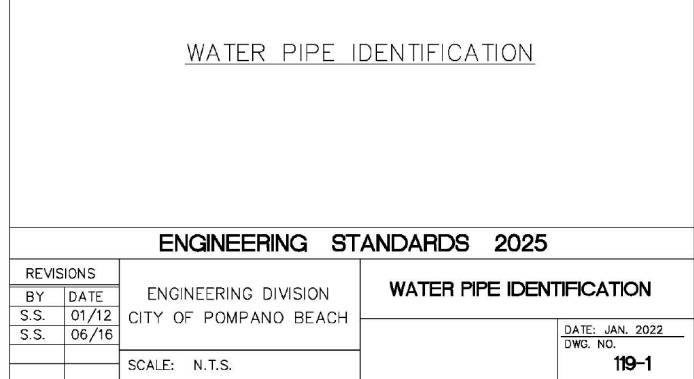
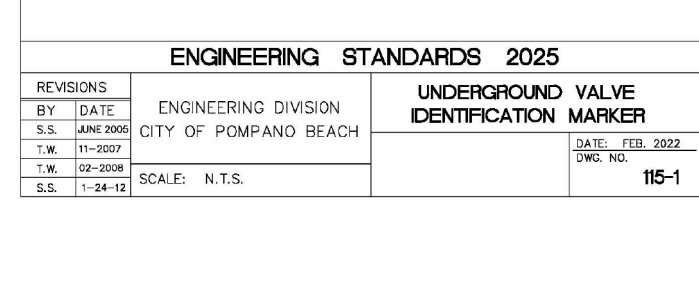
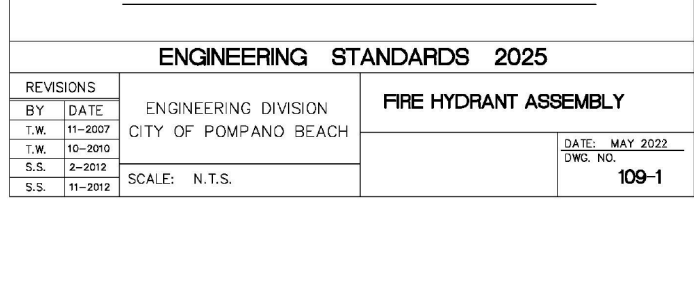


WATER DISTRIBUTION SYSTEM NOTES

1. ALL DUCTILE IRON PIPE MUST BE A MINIMUM CLASS 51. PIPE SIZES SHALL CONFORM TO ANWWA C110/A21-10-98. ALL DUCTILE IRON PIPE SHALL BE CONFORM WITH THE REQUIREMENTS OF ANSI/AWWA C151/A21-51-02 AND BE CEMENT MORTAR LINED AND SEAL COATED PER ANSI/AWWA C104/A21-4-95. LATEST REVISION. ALL DUCTILE IRON REUSE IN THIS SPECURE E.
2. ALL POLYVINYL CHLORIDE (PVC) PIPE SHALL BE MANUFACTURED IN ACCORDANCE WITH ANWWA STANDARDS C900-97. THE PVC PIPE CLASS SHALL BE 235-DRI-8. THE PIPE SHALL OUTSIDE DIAMETER SHALL CONFORM TO ANSWA/AWWA C900 FOR 6' TO 12'.
3. ALL WATER MAIN PVP SHALL BE COLORED BLUE PER SECTION 62-555-320 (2)(1)(b)(3), FLORIDA ADMINISTRATIVE CODE.
4. PVC PIPE WATER REUSE MAINS (IF UTILIZED) SHALL BE COLORED PURPLE.
5. ALL PVP SHALL HAVE INTEGRAL BELT PUSH ON TYPE JOINTS CONFORMING TO ASTM D3139.
6. FITTINGS SHALL BE DUCTILE IRON MECHANICAL JOINT MEETING ANSI/AWWA C153/A21-53-00 SPECIFICATIONS. FITTINGS MUST BE CEMENT MORTAR LINED AND SEAL COATED PER ANSI/AWWA C104/A21-4-95.
7. GATE VALVES 4" AND LARGER SHALL MEET ANSI/AWWA C500-P-01 AND C500-C-02. LATEST REVISION. ALL VALVES SHALL BE IRON BODY BRONZE MOUNTED, RESISTANT SEATED, NON RISING STEM, PARALLEL FLY TYPE, OPENING DOWNWARD. LEAKAGE SHALL BE LESS THAN WORKING PRESSURE OF 200 P.S.I.. VALVES MUST BE MUELLER CO. OR APPROVED EQUAL.
8. FIRE HYDRANTS SHALL BE SAFETY FLANGE CONSTRUCTION, CAST IRON BODY, FULLY BRONZE MOUNTED, SUITABLE FOR WORKING PRESSURE OF 150 P.S.I., AND SHALL MEET THE REQUIREMENTS OF ANWA C502-S-4 SPECIFICATIONS. LATEST REVISION. FIRE HYDRANTS SHALL BE TRAFFIC BREAKAWAY TYPE - AMERICAN DANGER BB4-B OR APPROVED EQUAL.
9. FIRE HYDRANTS SHALL BE INSTALLED WITH THE CENTER OF THE HOSE NOZZLE 18" ABOVE GROUND. THE LAND FILLS SHALL BE IRON BODY BRONZE VALVE AS PLUG VALVE AND SERVICE CONNECTIONS SHALL BE BRONZE FROM VALVE TO PLUG VALVE AND SERVICE CONNECTIONS TO ANWS S SPECIFICATION C700-02.
10. ALL TRENCHING, PIPE LAYING, BACKFILL, PRESSURE TESTING AND DISINFECTING MUST COMPLY WITH BROWARD COUNTY HEALTH DEPARTMENT MINIMUM CONSTRUCTION REQUIREMENTS AND WITH THE CITY OF PLANTATION MINIMUM STANDARDS.
11. ALL INSTALLATIONS SHALL BE AT LEAST 12" BELOW ANY EXISTING "X" LIFTS AND EACH LIFT TAMPED & DENSITY TESTED, UNLESS OTHERWISE APPROVED BY THE RECORD ENGINEER AND THE AGENCY WATER SUPERVISOR.
12. ALL CONNECTIONS TO EXISTING MAINS SHALL BE MADE UNDER THE DIRECTION OF THE UTILITY DEPARTMENT HAVING JURISDICTION, AND THE RECORD ENGINEER.
13. THE MINIMUM DEPTH OF COVER OVER WATER MAINS SHALL BE 30 INCHES FOR DIP & 36 INCHES FOR P.V.C.
14. DISINFECTION OF MAINS SHALL COMPLY WITH ANWWA 651-05. STANDARD BACTERIOLOGICAL SAMPLING POINTS ARE DESIGNATED ON THE ENGINEERING PLANS.
15. ALL PIPE, FITTINGS, ETC., SHALL BE TESTED UNDER A CONSTANT PRESSURE OF 150 PSI FOR 2 HOURS. LEAKAGE SHALL NOT EXCEED .05% PER ANSI/AWWA SPECIFICATIONS FOR LATEST REVISION OF C600-O5 LEAKAGE FORMULA:

**Sunshine811**

Call 811 or www.sunshine811.com two full business days before digging to have utilities located and marked.

Check positive response codes before you dig!



THIS ITEM HAS BEEN DIGITALLY SIGNED AND SEALED
BY HOWARD E JABLON ON THE DATE ADJACENT TO THE
SEAL.

PRINTED COPIES OF THIS DOCUMENT ARE NOT
CONSIDERED SIGNED AND SEALED AND THE SIGNATURE
MUST BE VERIFIED ON ANY ELECTRONIC COPIES.

[illegible]

AJ HYDRO
ENGINEERING, INC.
5932 NW 73RD COURT
PARKLAND, FL 33067
TEL (954) 347-3397
AJHYDRO@BELLSOUTH.NET

PROJECT:

TITLE:

WATER DISTRIBUTION SYSTEM STANDARD DETAILS #1 & NOTES

SEAL :

DATE:

DRAWING NO.

25-0110

SHEET NO.

WS3 OF 5

HOWARD JABLON, PE
#47514